

Below is important information regarding using Zoom for private and group Lessons

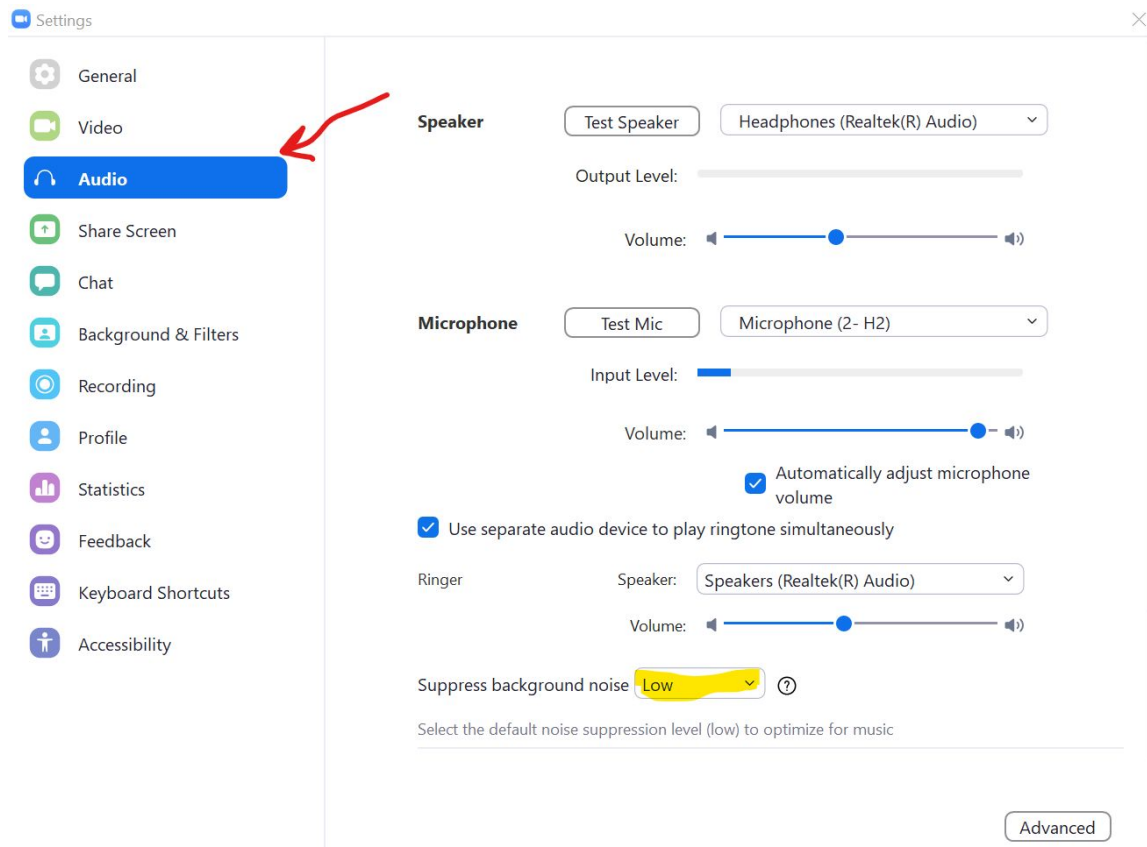
### **Initial Setup For Zoom**

I recommend doing this today or well before your first private Zoom lesson or Group Lesson

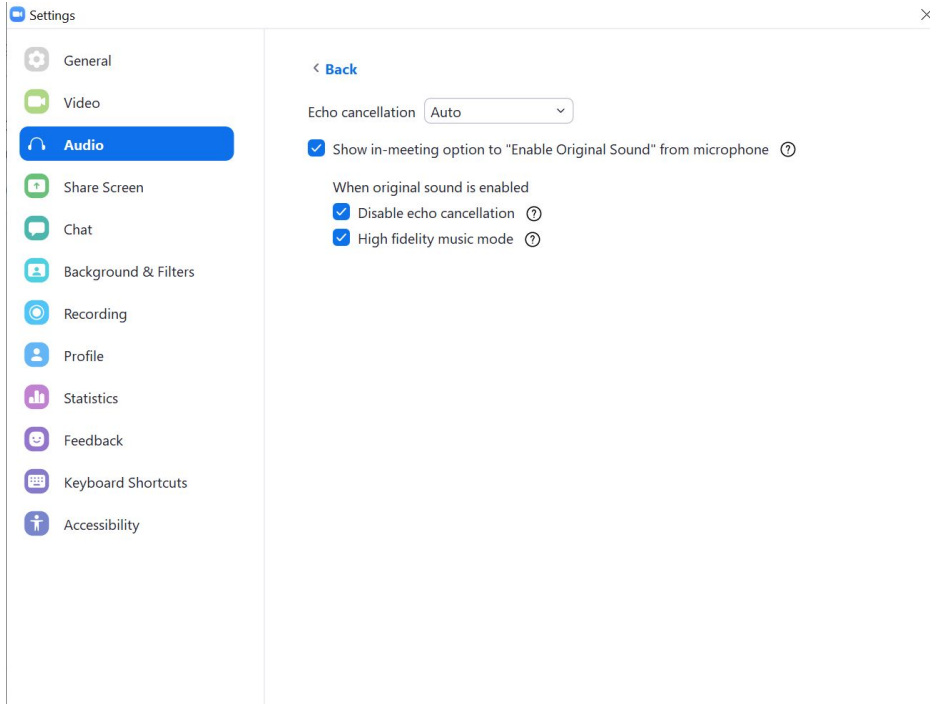
**NOTE: If you have been using Zoom in the past, go to the Zoom site and download the latest version of Zoom which is currently 5.2.3. This has new updates to improve sound quality**

- download and install Zoom for your device (laptop preferred), hardwired to your internet as opposed to using wifi (more on this below). The link for downloading is here <https://zoom.us/download>

- Go into Audio settings and set Suppress background noise to Low (see below)



- go into advanced audio settings by clicking on the Advanced button, then select the check box that allows you to turn on original sound. In addition click the checkbox beside 'Show in-meeting option to "enable original sound option from microphone"' and the 2 check boxes below entitled 'Disable echo cancellation' and 'High fidelity music mode'. (refer to diagram below)



- Here is a helpful youtube video to watch regarding setting up your settings for Zoom. Note: It indicates starting a New Meeting which would apply for teachers. For students, you will Select Join a Meeting and enter the Meeting ID and Password provided by your teacher. Also note that this video was created prior to the latest Hi Fidelity enhancement so does not depict these options as it was just introduced as of Sept 2, 2020 and is Hot off the press!

<https://www.youtube.com/watch?v=WoXM5wcpVNU>

### **Wifi vs Ethernet connection**

For best results you will need to connect your device directly to your router via an ethernet connection as opposed to using WiFi. This improves the latency issues. What does that mean? **Wired** networks are generally much **faster than wireless** networks. This is important when using Zoom as the new Hi Fidelity function can increase CPU utilization and consume greater network bandwidth. For best results, an ethernet connection (not wifi) is strongly recommended.

You may find yourself in a room that is very far away from your router and unable to connect with an ethernet cable to your laptop. In this case you can use a very long cable OR what might be more convenient is an outlet converter to enable ethernet connections anywhere in the house. Here is an Amazon link to this outlet converter:

[https://www.amazon.ca/TRENDnet-Powerline-Pass-Through-TPL-407E-TPL-407E-2K/dp/B009ZRBXMI/ref=sr\\_1\\_7?crd=2A4NJQBSHOWVC&dchild=1&keywords=ethernet+outlet+adapter&qid=1599703594&sprefix=ethernet+outl%2Caps%2C147&sr=8-7](https://www.amazon.ca/TRENDnet-Powerline-Pass-Through-TPL-407E-TPL-407E-2K/dp/B009ZRBXMI/ref=sr_1_7?crd=2A4NJQBSHOWVC&dchild=1&keywords=ethernet+outlet+adapter&qid=1599703594&sprefix=ethernet+outl%2Caps%2C147&sr=8-7)

You would also need two ethernet chords, one to connect from router to Powerline and the second to connect Powerline to laptop in the studio room. You may also require a dongle to convert the ethernet connection to a USB connection in order to connect the ethernet cord to a laptop. Some laptops still have ethernet connections but most newer models do NOT:

[https://www.amazon.ca/Cable-Matters-Ethernet-Adapter-Black/dp/B00ET4KHJ2/ref=sr\\_1\\_37?crd=2A4NJQBSHOWVC&dchild=1&keywords=ethernet+outlet+adapter&qid=1599703594&sprefix=ethernet+outl%2Caps%2C147&sr=8-37](https://www.amazon.ca/Cable-Matters-Ethernet-Adapter-Black/dp/B00ET4KHJ2/ref=sr_1_37?crd=2A4NJQBSHOWVC&dchild=1&keywords=ethernet+outlet+adapter&qid=1599703594&sprefix=ethernet+outl%2Caps%2C147&sr=8-37)

### **Internet Speed**

- To ensure the best results you should have an Internet connection of 50/10. This refers to the download speed (50 Mbps or megabits per second) and the upload speed (10 Mbps). To determine your Internet speed, you can use the following link to run a speed test. Note: run the test with the device and connection you will be using (again ideally directly connected to the internet with an ethernet cable as opposed to wifi). Now here is the link for the speed test <https://www.speedtest.net/>

### **Use an External Microphone**

- The best results for sound is to use an external microphone as opposed to the one available on the device. Suggestions for microphones are:

FIFine USB microphone

[https://www.amazon.ca/FIFINE-Microphone-Recording-Streaming-Broadcast/dp/B06XQ39XCY/ref=asc\\_df\\_B06XQ39XCY/?tag=googleshopc0c-20&linkCode=df0&hvadid=292950074830&hvpos=&hvnetw=g&hvrnd=12064771411768161682&hvpone=&hvptwo=&hvqmt=&hvdev=c&hvdvcmdl=&hvlocint=&hvlocphy=9000836&hvtargid=pla-563974502138&psc=1](https://www.amazon.ca/FIFINE-Microphone-Recording-Streaming-Broadcast/dp/B06XQ39XCY/ref=asc_df_B06XQ39XCY/?tag=googleshopc0c-20&linkCode=df0&hvadid=292950074830&hvpos=&hvnetw=g&hvrnd=12064771411768161682&hvpone=&hvptwo=&hvqmt=&hvdev=c&hvdvcmdl=&hvlocint=&hvlocphy=9000836&hvtargid=pla-563974502138&psc=1)

Blue Yeti USB microphone

[https://www.amazon.ca/Blue-Microphones-Yeti-Microphone-Blackout/dp/B00N1YPXW2/ref=asc\\_df\\_B00N1YPXW2/?tag=googleshopc0c-20&linkCode=df0&hvadid=292974172762&hvpos=&hvnetw=g&hvrnd=12109690637018448994&hvpone=&hvptwo=&hvqmt=&hvdev=c&hvdvcmdl=&hvlocint=&hvlocphy=9000836&hvtargid=pla-361504918229&psc=1](https://www.amazon.ca/Blue-Microphones-Yeti-Microphone-Blackout/dp/B00N1YPXW2/ref=asc_df_B00N1YPXW2/?tag=googleshopc0c-20&linkCode=df0&hvadid=292974172762&hvpos=&hvnetw=g&hvrnd=12109690637018448994&hvpone=&hvptwo=&hvqmt=&hvdev=c&hvdvcmdl=&hvlocint=&hvlocphy=9000836&hvtargid=pla-361504918229&psc=1)

### **Wired Headphones**

- For best results for students to hear the sound, use wired headphones or earbuds with a long cord to connect directly to the device again to avoid latency and echo. Long cord required so that you can be further away from the camera for a full view of the student.

### **Other items**

- Close all other programs on the laptop and have only Zoom on. Ensure all notifications are turned off so nothing is popping up during the lesson.

- If possible try to avoid others using your internet at the same time to reduce lag. I know this is a tall order as everyone is signing in from home these days but try to avoid someone else running a video game or anything that would use a lot of bandwidth during lesson time :)

- Find a quiet spot in the house clear of other noises and distractions

- Set up your camera so there is a good view of the student with a full view of the instrument, bow arm, instrument arm. Also try to have the angle straight on as opposed to a shot from below or above.

- Lots of light please!

- For private lessons, Parents, be available to take notes, help with adjusting student posture (especially with little ones)

- Tune the instrument before the lesson